

## How recognize a CARRARO product

The **METALLIC PLATE** on axle or transmission is the first way to recognize Carraro products.

This plate includes all necessary information to recognize the product and to make sure you are ordering the correct spare parts:

- “CARRARO” product
- Axle/transmission model
- Carraro axle/transmission part number

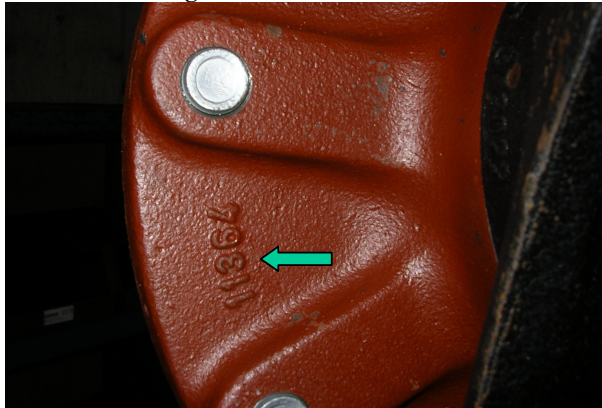
AXLE TYPE	SERIAL N.	
20.19		
CARRARO N.	CUSTOMER N.	TOTAL RATIO
CA359539		19.2
INPUT ROTATION	DIFFERENTIAL TYPE	
CW	LIMITED SLIP	
OIL SPECIFICATION	LOCAT.	LIT.
AGIP ROTRA MULTI TH	DIFF.	4.5
AGIP ROTRA MULTI TH	EPIC.	0.7
<b>CARRARO</b>		

MADE IN ITALY

If there is no identification plate you can just read the **five-digits number in relief on the castings** (see images below).

This code allows us the identification of the finished product so that we will be able to suggest you the correct spare part.

**Figure 1 – Wheel Hub**



**Figure 2 – Beam Central Body**



**Figure 3 – Differential Support**



**Figure 4 – Swivel Housing**

